

## Data sheet: Yonos MAXO 50/0,5-8 PN6/10

### Hydraulic data

|                                    |                        |
|------------------------------------|------------------------|
| Maximum operating pressure $P_N$   | 10 bar                 |
| Head max $H_{max}$                 | 8.0 m                  |
| Flow max $Q_{max}$                 | 15.0 m <sup>3</sup> /h |
| Minimum suction head at 50 °C $m$  | 3.0 m                  |
| Minimum suction head at 95 °C $m$  | 10.0 m                 |
| Minimum suction head at 110 °C     | 16.0 m                 |
| Min. fluid temperature $T_{min}$   | -20 °C                 |
| Max. fluid temperature $T_{max}$   | 110 °C                 |
| Min. ambient temperature $T_{min}$ | -20 °C                 |
| Max. ambient temperature $T_{max}$ | 40 °C                  |

### Motor data

|                               |  |
|-------------------------------|--|
| Energy efficiency index (EEI) | 0.20   |
| Mains connection              | 1~230 V ±10%, 50/60 Hz                               |
| Min current $I_{min}$         | 0.15 A   |
| Max current $I_{max}$         | 1.33 A   |
| Min. speed $n_{min}$          | 1200 1/min   |
| Max. speed $n_{max}$          | 4800 1/min   |
| Power consumption $P_{1 min}$ | 10.0 W   |
| Power consumption $P_{1 max}$ | 305.0 W  |
| Emitted interference          | EN 61800-3;2004+A1;2012 /residential area (C1)       |
| Interference resistance       | EN 61800-3;2004+A1;2012 /industrial environment (C2) |
| Threaded cable connection     | 2 x M20x1.5  |
| Insulation class              | F  |
| Protection class              | IPX4D  |

### Materials

|              |                 |
|--------------|-----------------|
| Pump housing | Cast iron       |
| Impeller     | PPS-GF40        |
| Shaft        | Stainless steel |
| Bearing      | Carbon-graphite |

### Installation dimensions

|   |        |
|---|--------|
| Pipe connection on the pressure side $DN_d$ | DN 50  |
| Pipe connection on the suction side $DN_s$  | DN 50  |
| Port-to-port length $L_0$                   | 240 mm |

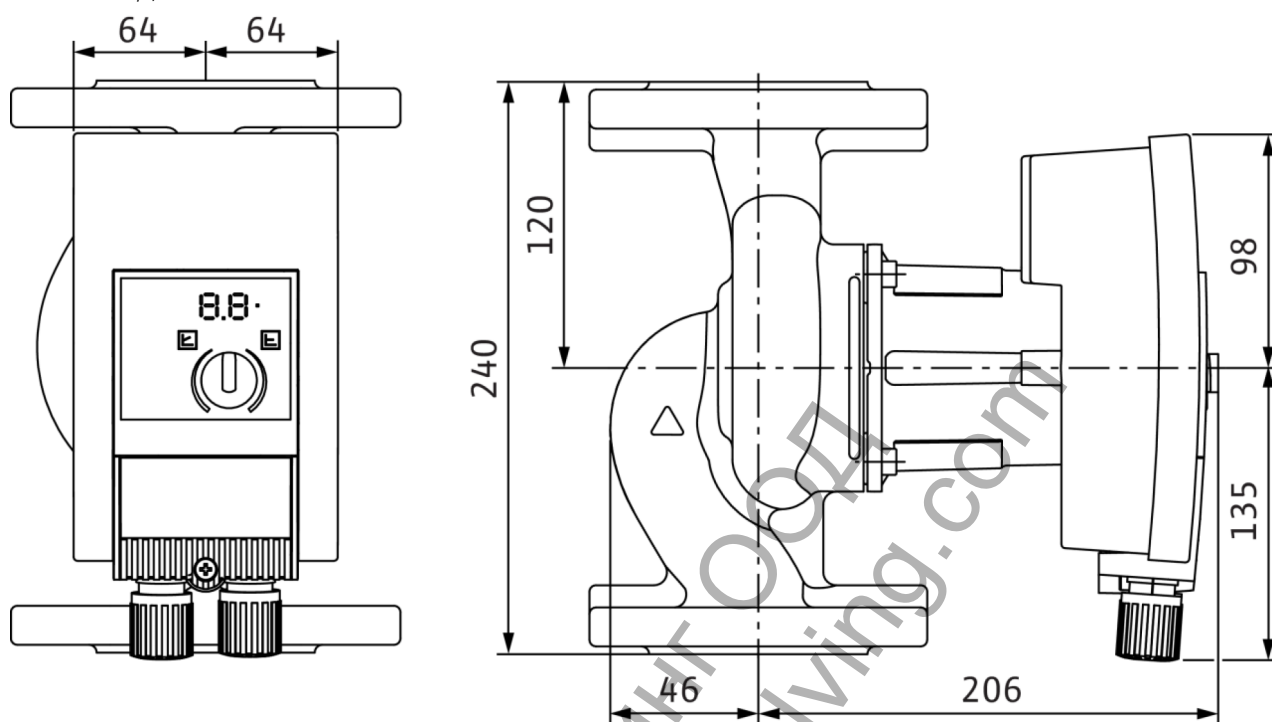
### Information for order placements

|                           |                            |
|---------------------------|----------------------------|
| Brand                     | Wilo                       |
| Product description       | Yonos MAXO 50/0,5-8 PN6/10 |
| EAN number                | 4048482235950              |
| Article number            | 2120649                    |
| Net weight, approx. $m$   | 11 kg                      |
| Gross weight, approx. $m$ | 12.1 kg                    |
| Length with packaging     | 325 mm                     |
| Height with packaging     | 215 mm                     |
| Width with packaging      | 305 mm                     |
| Packaging property        | Transport packaging        |
| Packaging type            | Cardboard box              |
| Minimum order quantity    | 1                          |

Ташев-Галвинг ООД  
www.tashev-galving.com

Dimensions and dimensions drawings: Yonos MAXO 50/0,5-8 PN6/10

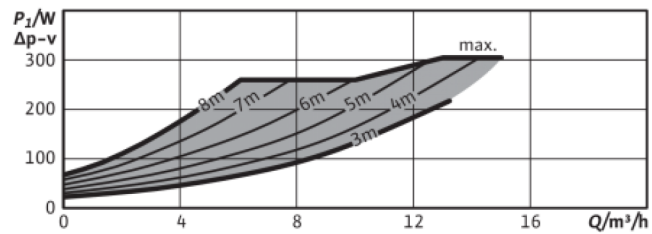
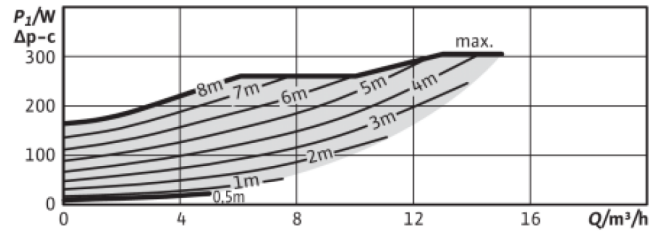
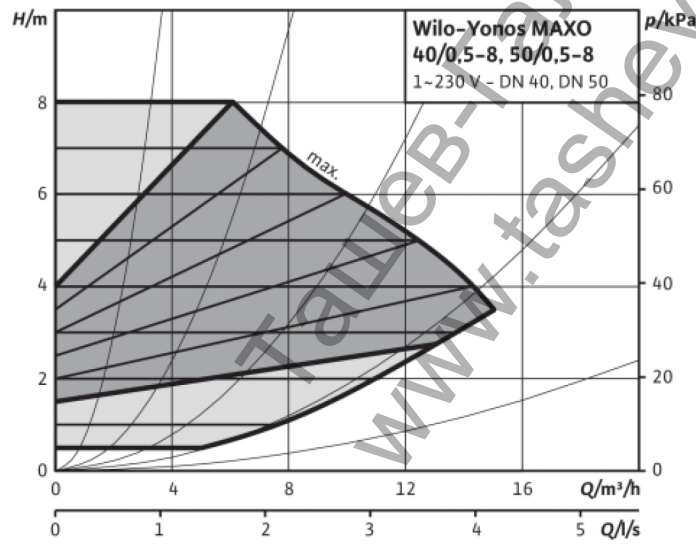
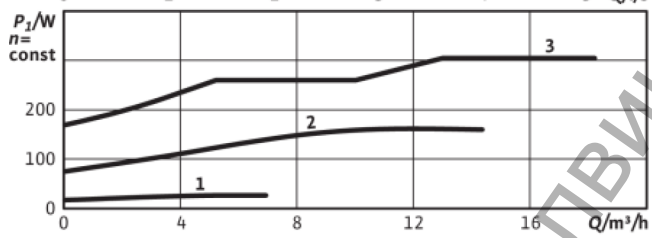
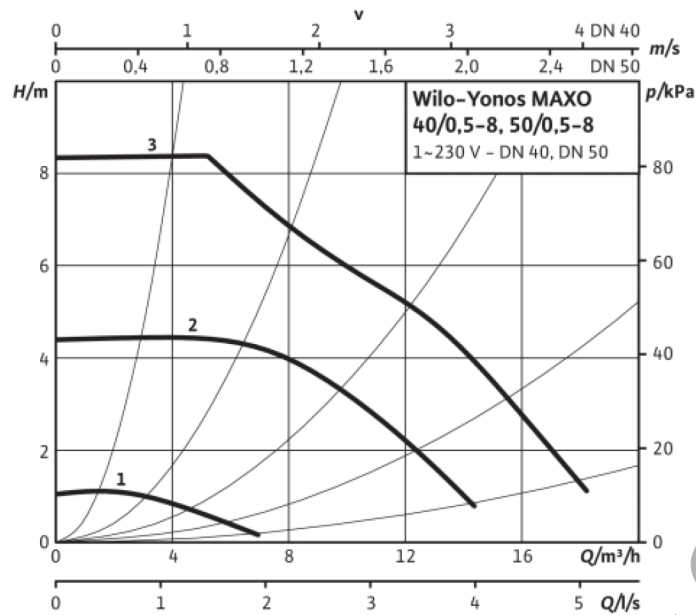
Yonos MAXO 50/0,5-8



Ташев-Галвинг ООЗД  
www.tashev-galving.com

## Pump curves: Yonos MAXO 50/0,5-8 PN6/10

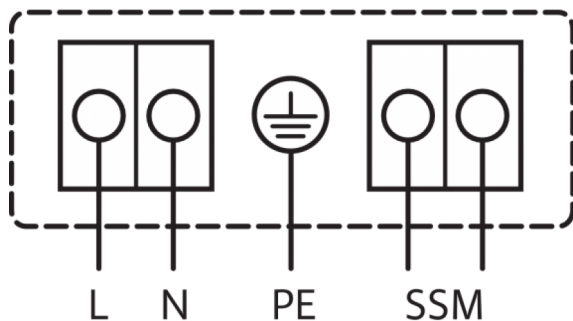
Yonos MAXO 40/0,5-8



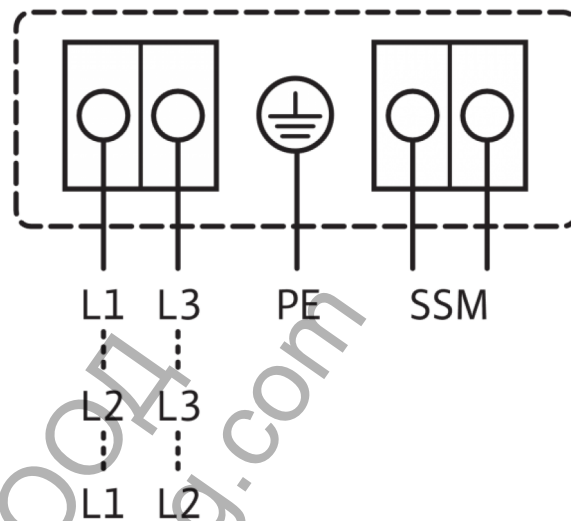
## Wiring diagram: Yonos MAXO 50/0,5-8 PN6/10

1~230V, 50/60 Hz

1~ 230 V, 50/60 Hz



3~230 V, 50/60 Hz



SSM:

Collective fault signal

Standard: 1~230 V, 50/60 Hz

(NC contact in accordance with VDI 3814, load capacity 1 A, 250 V ~)

Option: 3~230 V, 50/60 Hz

Ташев-Галвинг-ООО  
www.tashev-galving.com